

# A last wish, a lasting memory...



## Our foundation year partnership and donation opportunities



[ambulancewishqld.org.au](http://ambulancewishqld.org.au)



## About Ambulance Wish Queensland

Inspired by two Hervey Bay paramedics who took a terminally ill woman to her favourite beach for one last visit and based on a program started in the Netherlands in 2007, Ambulance Wish Queensland is the first program of its kind in Australia.

Our mission is simple: to give Queenslanders living with a terminal illness access to the specialist transport and medical care they need to fulfil their last wish.

Near the end of life, these are often simple things like a last visit to the family home, the chance to watch a grandchild get married or to see one last sunset.



## An incredible response

Ambulance Wish Queensland was launched in July 2019 by State Minister for Health and Ambulance Services the Honourable Steven Miles at Parliament House in Brisbane.

Our first wish recipient was 92-year-old palliative care patient Betty Dowsett, whose wish was to enjoy a passionfruit ice-cream, which she shared with the Minister ... and a packed media contingent at the early morning launch.

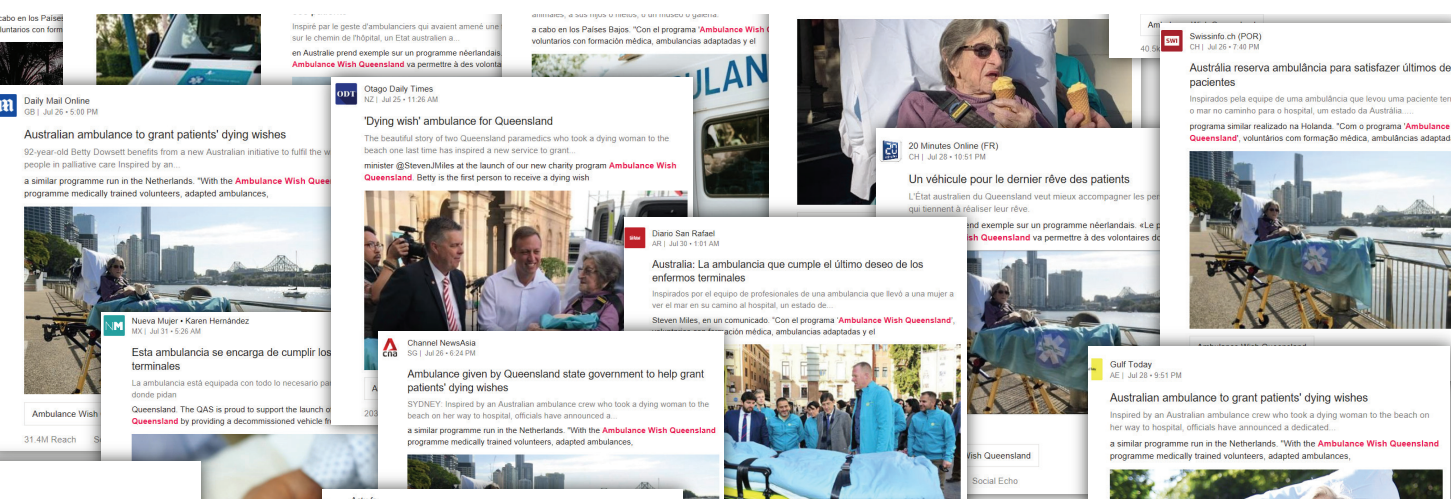
The story was broadcast by every TV station in Queensland as well as receiving prime-time national coverage on ABC TV and radio, and all News Corp and Nine Entertainment publications, online and in print, across Australia.

The following day, Betty and one of our volunteer paramedics, Darren Lawrence, were guests on Australia's top-rating breakfast program Sunrise and the story was picked up by The Daily Mail UK and one of the world's largest news agencies, Agence-France Press resulting in extraordinary international reach.

**The potential global media reach was a staggering 78.43 million.\***

**Social media also went viral with posts hitting engagement numbers of more than 12 million.**

We continue to receive regular media enquiries, interview requests and guest speaker invitations.



\*Meltwater 2019

## How you can help fulfil a last wish

Ambulance Wish Queensland is a program of Palliative Care Queensland, a leading charity that has been supporting Queenslanders to live, die and grieve well for more than 30 years.

On 1 December 2019, we will officially open our wish applications at the Palliative Care in Queensland Awards Dinner, at the Brisbane Convention and Exhibition Centre, and plan to begin fulfilling wishes from January 2020.

We have been gifted a de-commissioned ambulance by the Queensland Government, which will operate within 100km of the Brisbane CBD. Our goal is to have a fleet of Wish ambulances that we can operate across the state.

## Why partner with us

Every moment is precious, which is something we begin to truly appreciate as we get older or we face the loss of a loved one. By partnering with Ambulance Wish Queensland in our foundation year, you will have the opportunity to join us at the start of what we know will become a cherished experience for many Queenslanders.

Palliative Care Queensland is registered with the Australian Charities and Not-for-profits Organisation and 85 per cent of every dollar donated goes directly to the operation of PCQ programs.

We have a range of collaborations available and are happy to explore bespoke opportunities for your business.

## Corporate Partners

### Major Partners

Our major partners will help support Ambulance Wish Queensland to fulfil the last wishes of terminally ill Queenslanders, as well as the opportunity to be part of other Palliative Care Queensland programs that provide valuable access to health professionals, industry leaders and and community members.

### Program Partners

Ambulance Wish program partners will help support the ongoing operations of this unique charity.

### Volunteer Village Partners

Our Volunteer Village is made up of health professionals including paramedics, doctors and nurses, as well as photographers, event coordinators, fundraisers and office teams. Our Volunteer Village partners will support the recruitment and training of our volunteers as well as regular social functions to build this community.

### Wish Partners

Our wish partners help us deliver ten special wishes every year.

## Supporting Partners

Our supporting partner will provide much needed resources for specific aspects of the program.

### Fuel Partner

Our fuel partner will help us provide fuel for the wish ambulance and support team vehicles.

### Vehicle Partner

Our vehicle partner will help us maintain and repair our wish ambulance and support vehicles.

### Stretcher Partner

Our stretcher partner will help provide and maintain the reclining equipment needed.

### Memory Book Partner

Our memory book partner will help us create a lasting memento and record of each wish.

### Blanket Partner

Our blanket partner will help us provide the special blanket used to provide comfort during the wish.

### Bear Partner

Our bear partner will help us provide a comfort bear for each wish recipient.

## Make a tax deductible donation

We want to enable all Queenslanders with terminal illness requiring a stretcher to have access to fulfil their last wish. One off or regular donations enable us to achieve this, make a donation now by visiting our website [ambulancewishqld.org.au](http://ambulancewishqld.org.au)



Become a founding friend of Ambulance Wish Queensland by donating \$10,000 or more in our founding year

## Donate a wishlist item

Another way of supporting to Ambulance Wish Queensland is to provide a one-off item for the operational components of the program. Our current donation wish list items are:



**Padded stretcher mattress**  
Provides extra comfort for our wish recipients during their wish which can take between 1 hour to a day.



**Support team vehicle**  
A people mover/SUV which enables the support team to follow the Wish Ambulance.



**Wish Ambulance fitout**  
Convert the Wish Ambulance into a family friendly and comfortable space, enabling the journey to become a part of the experience.



**Stair wheelchair** - Enabling wish recipients to visit Queensland style homes and other environments with stairs



**Beach chair and roll out sand mat** - Enabling wish recipients to not only look at the beach but to feel it on their skin one last time



**Electronic stretcher with large wheels** - Enabling smooth movement in and out of the wish ambulance and on bumpy surfaces.



**Portable comfort chair**  
Enabling wish recipients to have an alternative to a stretcher to improve comfort on their wish



**Warehouse located close to Brisbane CBD**  
Ability to store a minimum of 3 vehicles indoors and wish equipment, as well as training room for up to 30 people

## Other ways to get involved



## Contact

**Shyla Mills**  
Chief Executive Officer, Palliative Care Queensland  
**Email:** [partnerships@ambulancewishqld.org.au](mailto:partnerships@ambulancewishqld.org.au)  
**Phone:** 07 3511 1539



Palliative Care Queensland is a registered charity (registered with ACNC- CH1825) and is endorsed as a Deductible Gift Recipient (DGR)  
ABN: 49047803923